

Vikas Ahlawat Architects

 110/111, Sector-54, Connaught Place, New Delhi-110048

 Phone: +91 11 2610 1111

 Email: info@vikasahlawat.com

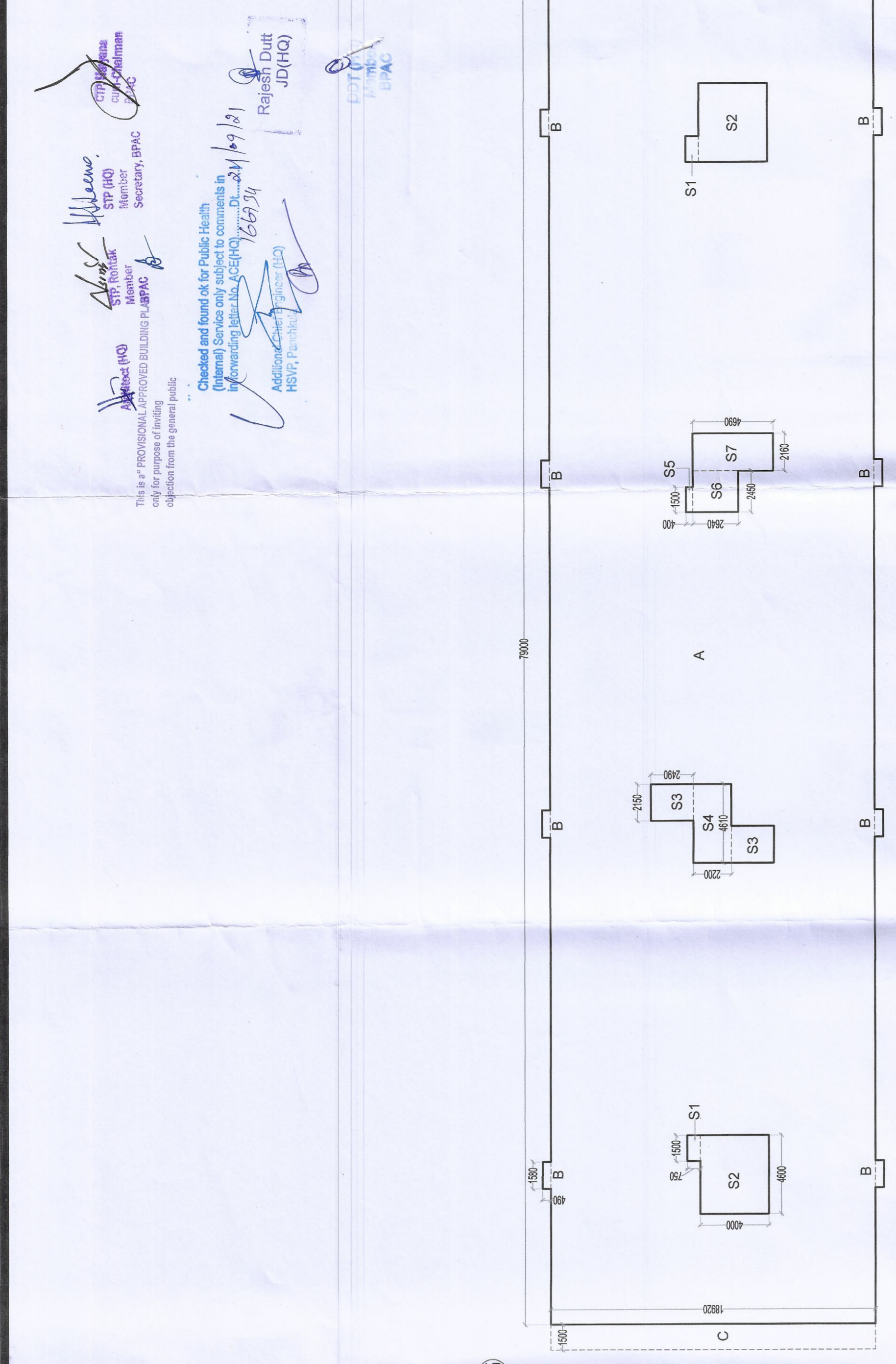
 Website: www.vikasahlawat.com

 Architect: Vikas Ahlawat

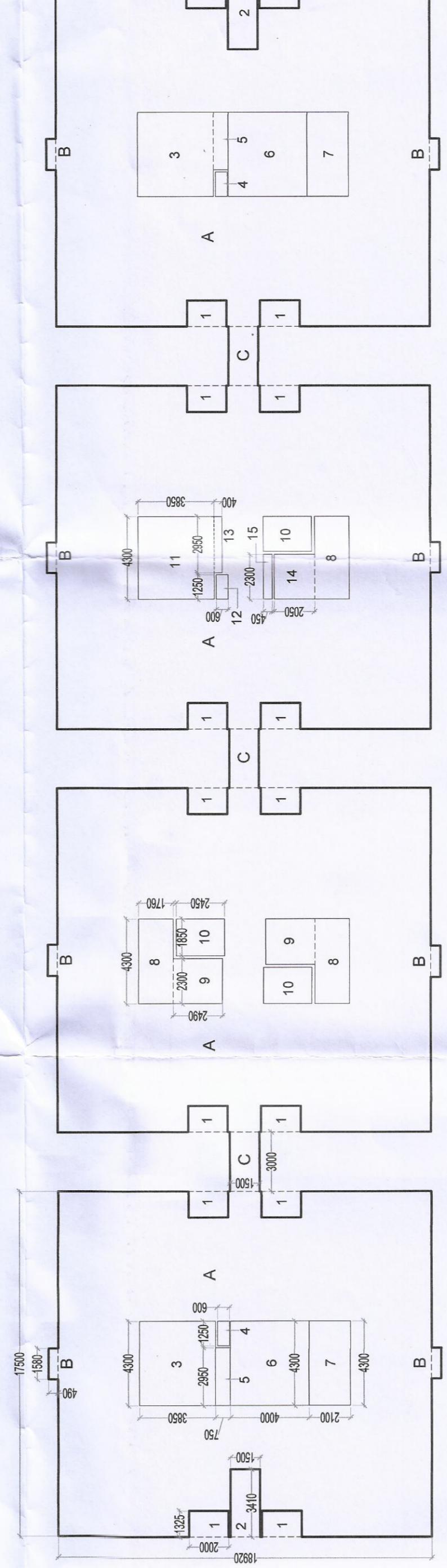
 Project: STILT FLOOR (TOWER-J)

 Date: 2021

 Scale: 1:100 (A0)



GROUND COVERAGE & STILT FLOOR F.A.R. AREA DIAGRAM (TOWER-J)



1ST TO 13TH FLOOR F.A.R. AREA DIAGRAM (TOWER-J)

DOOR WINDOW SCHEDULE

NAME	WIDTH	HEIGHT	CILL	UNIT/L
FD	1050	2150	---	2150
DW1	3000	2450	900	2450
DW2	1000	2450	900	2450
DW3	1400	2450	1050	2450
DW4	1050	2150	---	2150
DW5	915	2150	---	2150
DW6	1700	2450	900	2450
DW7	1000	2450	900	2450
DW8	600	2450	1500	2450

STILT FLOOR F.A.R.

ADDITIONS	S.A.O. NO.	PREFIX	LENGTH	BREATH	AREA
S1	1	1.500	0.250	2.250	0.844
S2	2	1.500	0.250	2.250	0.844
S3	3	1.500	0.250	2.250	0.844
S4	4	1.500	0.250	2.250	0.844
S5	5	1.500	0.250	2.250	0.844
S6	6	1.500	0.250	2.250	0.844
S7	7	1.500	0.250	2.250	0.844
S8	8	1.500	0.250	2.250	0.844
S9	9	1.500	0.250	2.250	0.844
S10	10	1.500	0.250	2.250	0.844
S11	11	1.500	0.250	2.250	0.844
S12	12	1.500	0.250	2.250	0.844
S13	13	1.500	0.250	2.250	0.844
S14	14	1.500	0.250	2.250	0.844
S15	15	1.500	0.250	2.250	0.844
S16	16	1.500	0.250	2.250	0.844
S17	17	1.500	0.250	2.250	0.844
S18	18	1.500	0.250	2.250	0.844
S19	19	1.500	0.250	2.250	0.844
S20	20	1.500	0.250	2.250	0.844
S21	21	1.500	0.250	2.250	0.844
S22	22	1.500	0.250	2.250	0.844
S23	23	1.500	0.250	2.250	0.844
S24	24	1.500	0.250	2.250	0.844
S25	25	1.500	0.250	2.250	0.844
S26	26	1.500	0.250	2.250	0.844
S27	27	1.500	0.250	2.250	0.844
S28	28	1.500	0.250	2.250	0.844
S29	29	1.500	0.250	2.250	0.844
S30	30	1.500	0.250	2.250	0.844
S31	31	1.500	0.250	2.250	0.844
S32	32	1.500	0.250	2.250	0.844
S33	33	1.500	0.250	2.250	0.844
S34	34	1.500	0.250	2.250	0.844
S35	35	1.500	0.250	2.250	0.844
S36	36	1.500	0.250	2.250	0.844
S37	37	1.500	0.250	2.250	0.844
S38	38	1.500	0.250	2.250	0.844
S39	39	1.500	0.250	2.250	0.844
S40	40	1.500	0.250	2.250	0.844
S41	41	1.500	0.250	2.250	0.844
S42	42	1.500	0.250	2.250	0.844
S43	43	1.500	0.250	2.250	0.844
S44	44	1.500	0.250	2.250	0.844
S45	45	1.500	0.250	2.250	0.844
S46	46	1.500	0.250	2.250	0.844
S47	47	1.500	0.250	2.250	0.844
S48	48	1.500	0.250	2.250	0.844
S49	49	1.500	0.250	2.250	0.844
S50	50	1.500	0.250	2.250	0.844
S51	51	1.500	0.250	2.250	0.844
S52	52	1.500	0.250	2.250	0.844
S53	53	1.500	0.250	2.250	0.844
S54	54	1.500	0.250	2.250	0.844
S55	55	1.500	0.250	2.250	0.844
S56	56	1.500	0.250	2.250	0.844
S57	57	1.500	0.250	2.250	0.844
S58	58	1.500	0.250	2.250	0.844
S59	59	1.500	0.250	2.250	0.844
S60	60	1.500	0.250	2.250	0.844
S61	61	1.500	0.250	2.250	0.844
S62	62	1.500	0.250	2.250	0.844
S63	63	1.500	0.250	2.250	0.844
S64	64	1.500	0.250	2.250	0.844
S65	65	1.500	0.250	2.250	0.844
S66	66	1.500	0.250	2.250	0.844
S67	67	1.500	0.250	2.250	0.844
S68	68	1.500	0.250	2.250	0.844
S69	69	1.500	0.250	2.250	0.844
S70	70	1.500	0.250	2.250	0.844
S71	71	1.500	0.250	2.250	0.844
S72	72	1.500	0.250	2.250	0.844
S73	73	1.500	0.250	2.250	0.844
S74	74	1.500	0.250	2.250	0.844
S75	75	1.500	0.250	2.250	0.844
S76	76	1.500	0.250	2.250	0.844
S77	77	1.500	0.250	2.250	0.844
S78	78	1.500	0.250	2.250	0.844
S79	79	1.500	0.250	2.250	0.844
S80	80	1.500	0.250	2.250	0.844
S81	81	1.500	0.250	2.250	0.844
S82	82	1.500	0.250	2.250	0.844
S83	83	1.500	0.250	2.250	0.844
S84	84	1.500	0.250	2.250	0.844
S85	85	1.500	0.250	2.250	0.844
S86	86	1.500	0.250	2.250	0.844
S87	87	1.500	0.250	2.250	0.844
S88	88	1.500	0.250	2.250	0.844
S89	89	1.500	0.250	2.250	0.844
S90	90	1.500	0.250	2.250	0.844
S91	91	1.500	0.250	2.250	0.844
S92	92	1.500	0.250	2.250	0.844
S93	93	1.500	0.250	2.250	0.844
S94	94	1.500	0.250	2.250	0.844
S95	95	1.500	0.250	2.250	0.844
S96	96	1.500	0.250	2.250	0.844
S97	97	1.500	0.250	2.250	0.844
S98	98	1.500	0.250	2.250	0.844
S99	99	1.500	0.250	2.250	0.844
S100	100	1.500	0.250	2.250	0.844

STILT FLOOR F.A.R.

ADDITIONS	S.A.O. NO.	PREFIX	LENGTH	BREATH	AREA
A	1	1.500	18.350	5.946	164.680
B	2	1.500	18.350	5.946	164.680
C	3	1.500	18.350	5.946	164.680
D	4	1.500	18.350	5.946	164.680
E	5	1.500	18.350	5.946	164.680
F	6	1.500	18.350	5.946	164.680
G	7	1.500	18.350	5.946	164.680
H	8	1.500	18.350	5.946	164.680
I	9	1.500	18.350	5.946	164.680
J	10	1.500	18.350	5.946	164.680
K	11	1.500	18.350	5.946	164.680
L	12	1.500	18.350	5.946	164.680
M	13	1.500	18.350	5.946	164.680
N	14	1.500	18.350	5.946	164.680
O	15	1.500	18.350	5.946	164.680
P	16	1.500	18.350	5.946	164.680
Q	17	1.500	18.350	5.946	164.680
R	18	1.500	18.350	5.946	164.680
S	19	1.500	18.350	5.946	164.680
T	20	1.500	18.350	5.946	164.680
U	21	1.500	18.350	5.946	164.680
V	22	1.500	18.350	5.946	164.680
W	23	1.500	18.350	5.946	164.680
X	24	1.500	18.350	5.946	164.680
Y	25	1.500	18.350	5.946	164.680
Z	26	1.500	18.350	5.946	164.680
AA	27	1.500	18.350	5.946	164.680
AB	28	1.500	18.350	5.946	164.680
AC	29	1.500	18.350	5.946	164.680
AD	30	1.500	18.350	5.946	164.680
AE	31	1.500	18.350	5.946	164.680
AF	32	1.500	18.350	5.946	164.680
AG	33	1.500	18.350	5.946	164.680
AH	34	1.500	18.350	5.946	164.680
AI	35	1.500	18.350	5.946	164.680
AJ	36	1.500	18.350	5.946	164.680
AK	37	1.500	18.350	5.946	164.680
AL	38	1.500	18.350	5.946	164.680
AM	39	1.500	18.350	5.946	164.680
AN	40	1.500	18.350	5.946	164.680
AO	41	1.500	18.350	5.946	164.680
AP	42	1.500	18.350	5.946	164.680
AQ	43	1.500	18.350	5.946	164.680
AR	44	1.500	18.350	5.946	164.680
AS	45	1.500	18.350	5.946	164.680
AT	46	1.500	18.350	5.946	164.680
AU	47	1.500	18.350	5.946	164.680
AV	48	1.500	18.350	5.946	164.680
AW	49	1.500	18.350	5.946	164.680
AX	50	1.500	18.350	5.946	164.680
AY	51	1.500	18.350	5.946	164.680
AZ	52	1.500	18.350	5.946	164.680
BA	53	1.500	18.350	5.946	164.680
BB	54	1.500	18.350	5.946	164.680
BC	55	1.500	18.350	5.946	164.680
BD	56	1.500	18.350	5.946	164.680
BE	57	1.500	18.350	5.946	164.680
BF	58	1.500	18.350	5.946	164.680
BG	59	1.500	18.350	5.946	164.680
BH	60	1.500	18.350	5.946	164.680
BI	61	1.500	18.350	5.946	164.680
BJ	62	1.500	18.350	5.946	164.680
BK	63	1.500	18.350	5.946	164.680
BL	64				